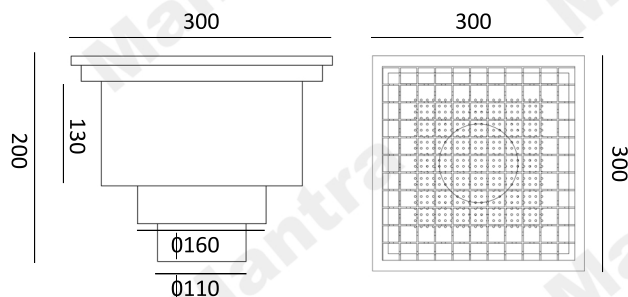
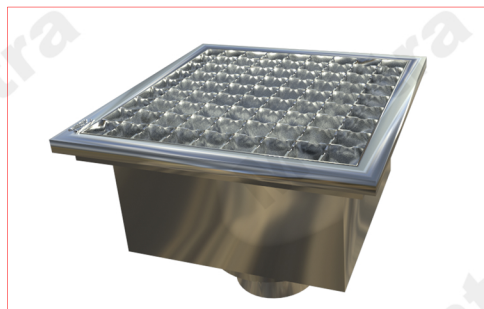




GULLY TRAP

LOAD CLASS
3MM TROLLY
2MM HUMAN



TECHNICAL DATA SHEET FOR GULLY TRAP

CODE	MATERIAL	EXTERNAL DIMENSIONS LxLxh (mm)	INTERNAL DIMENSIONS LxLxh (mm)	WEIGHT	DRAINAGE SURFACE (cm) ²
M24	SS 304	300x300x200	244x244x1.5	8.639KG	136.8

TABLE 1

Dependence of chemical, physical and mechanical properties of
POLYOLEFINS, on density and molecular structure

STRUCTURAL PARAMETERS	DENSITY g/cm ³		MOLECULAR STRUCTURE	
Threshold values	0,900	0,970	considerably branched	linear
Crystallisation degree	+/-	+/+	-/-	+/+
Fluidity Index	o	o	o	o
Workability	+	-	+	-
Tensile strength and bending strength	→		→	
Elongation at break	←		←	
Rigidity and hardness	→		→	
Shock resistance	←		→	
Resistance to stress-induced cracks	→		→	
Crystal melting field and heat deformation temperature	→		→	
Cold breaking temperature	→		→	
Chemical resistance and resistance to solvents	→		→	
Resistance to gas and vapour diffusion	→		→	

+ -: high or low values °: no special effects → : positive effect increasing in the direction of the arrow

TABLE 1

Summary of main characteristics of POLYOLEFINS

STRUCTURAL PARAMETERS	UNIT	LD-PE	PE-HD	PP-H	PP-R
Density	g/cm ³	0,916-0,920	0,940-0,960	0,900-0,915	0,895-0,900
Elasticity modulus E (DIN 53457)	MPa	200-400	600-1400	1300-1800	600-1200
Tensile strength (DIN 53455)	N/mm ²	8/23	18/35	21/37	21/37
Elongation (DIN 53455)	%	C.a. 20	C.a. 8-12	C.a. 8-18	C.a. 12-18
Melting point	°C	105-118	126-135	162-168	135-155
Thermal expansion coefficient	mm/°C	20x12 ⁻⁵	20x12 ⁻⁵	15x12 ⁻⁵	15x12 ⁻⁵
Dielectric constant at 100 Hz	—	2,3	2,4	2,3	2,3
Water absorption at 23°C	%	< 0,05	< 0,05	< 0,20	< 0,20

1. For drainage purposes use the drain gate with outlet kit (available in two versions o100 and o110)
N.B. Waterproofing in order to ensure the channels are waterproof, a bituminous adhesive sealant should be used
Heat-sealing the channel joints make sure there will be no leakage through said joints for a very long time. For further info, please contact MANTRA DRAIN SOLUTIONS.
N.B. Sizes and weights are subject to usual manufacturing tolerance values.

