



FRP GULLY GRATING

B 125 MD
LOAD CLASS



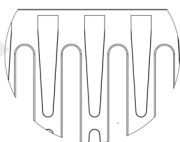
APPLICATIONS OF FRP GULLY GRATING

Road Carriageways (not transversal)

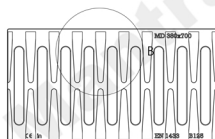
Hard Shoulders

Lay-bys with thick & Heavy-goods traffic

Petrol Stations



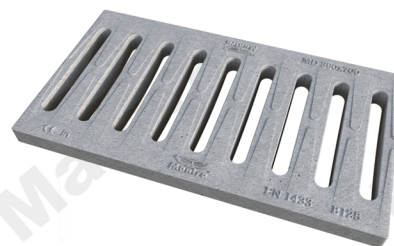
DETAIL VIEW



TOP VIEW



SIDE VIEW



TECHNICAL DATA SHEET FOR FRP GULLY GRATING

CODE	MATERIAL	DIMENSIONS (WxLxH)
M39	FRP GULLY GRATING	380 x 700 x 40
M40	FRP GULLY GRATING	450 x 700 x 40
M41	FRP GULLY GRATING	650 x 500 x 45

M26, FRP GRATING 50MM STANDARD SPECIFICATION samples not drawn by Elca the above sample has been tested and the results are as below

LOAD TEST

SN. NO	Parameter/Description	Actual Values	Specification Req	Remark
1	Load in KN	Deflection in mm		
2	at 5 KN	0.0		Test carried out as per EN 124-5/6.2 sample not
3	at 6 KN	2.0		crack dia delaminate after testing
4	at 8 KN	4.21		Allowance defection @Mantra is 1% KN which acceptable
5	at 9 KN	6.43		
6	at 10 KN	8.28		
7	at 15 KN	10.20		
8	at 18 KN			
9	at 20 KN			
10				

Height (MM)	Span (MM)	Concentrated Point Load (KG)	Line Load (KG/M)	Uniform Load (KG/M2)
		Deflection 1% Span		
25	500	300 - 325	525 - 550	2600 - 2650
38 X 75	750	120 - 130	210 - 220	730 - 740
MESH	1000	80 - 90	140 - 150	400 - 410
25	500	260 - 270	450 - 470	2300 - 2350
38 X 38	750	110 - 120	200 - 210	700 - 710
MESH	1000	60 - 70	100 - 120	290 - 300
30	500	460 - 460	800 - 820	4000 - 4010
38 X 38	750	200 - 210	350 - 360	1180 - 1190
MESH	1000	100 - 120	200 - 210	500 - 510
	1500	50 - 60	80 - 90	140 - 150
38	500	930 - 940	1640 - 1650	7900 - 8000
38 X 38	750	410 - 420	1150 - 1160	5600 - 5800
MESH	1000	230 - 240	410 - 420	900 - 900
	1500	100 - 110	160 - 170	290 - 300
	2000	50 - 60	100 - 110	120 - 130
50	500	1000-1050	1800-1850	9000-9500
55 X 55	750	750-800	1550-1600	8000-8500
MESH	1000	600-650	1400-1450	1950-2000
	1500	550-600	1300-1350	1500-1550
	2000	450-500	1250-1300	950-1000

1. For drainage purposes use the drain gate with outlet kit (available in two versions o100 and o110)

N.B Waterproofing in order to ensure the channels are waterproof, a bituminous adhesive sealant should be used Heat-sealing the channel joints make sure there will be no leakage through said joints for a very long time. For further info. please contact MANTRA DRAIN SOLUTIONS.

N.B. Sizes and weights are subject to usual manufacturing tolerance values.

