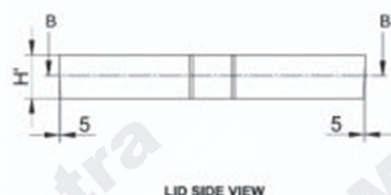
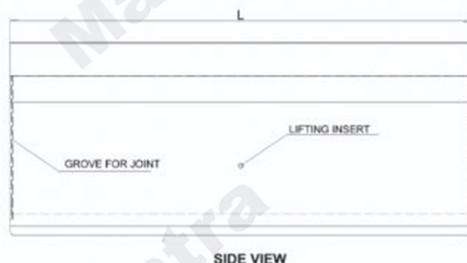
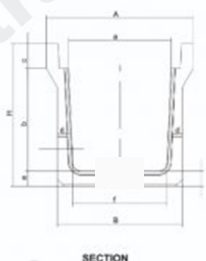
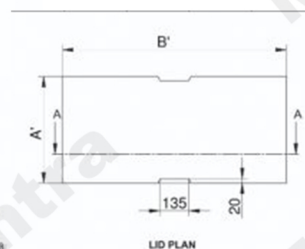
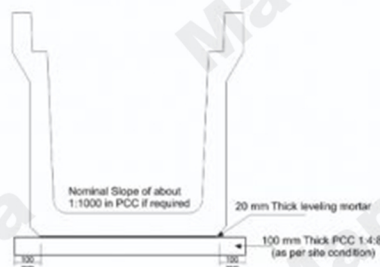
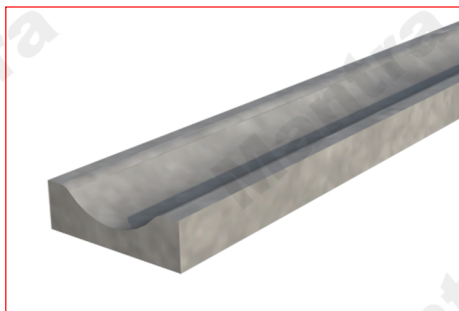




CE

CHANNEL

TYPE D400

**Mantra**
DRAIN SOLUTIONS**TDS FOR PRECAST SAUCER DRAIN CHANNEL**

CODE	MATERIAL	EXTERNAL DIMENSIONS LxHx (mm)	CAPACITY
M37	POLYMER CONCRETE	300 X 450 X 75/100	D400

Size (mm) B X H	Dimensions of u shape drain (mm)										Appx. Weight (kg)
	L	A	B	H	a	b	c	d	e	f	
300 x 400	2000	520	410	565	300	400	95	70	70	270	510
450 x 450	2000	700	590	650	450	450	120	80	80	430	650
600 x 600	2000	860	730	835	600	600	145	90	90	550	900
750 x 750	2000	1050	890	1000	750	750	150	100	100	690	1300
900 x 900	2000	1200	1070	1170	900	900	150	120	120	830	1750

Size of Drain (mm)	Dimensions of Lid (mm)			Appx. Weight (kg)
	A'	B'	H'	
300 x 400	500	410	95	50
450 x 450	500	572	120	90
600 x 600	500	732	145	140
750 x 750	500	902	150	175
900 x 900	500	1052	150	200

1. For drainage purposes use the drain gate with outlet kit (available in two versions $\phi 100$ and $\phi 110$)

N.B. Waterproofing in order to ensure the channels are waterproof, a bituminous adhesive sealant should be used. Heat-sealing the channel joints make sure there will be no leakage through said joints for a very long time. For further info, please contact MANTRA DRAIN SOLUTIONS.

N.B. Sizes and weights are subject to usual manufacturing tolerance values.

**Mantra**
DRAIN SOLUTIONS