

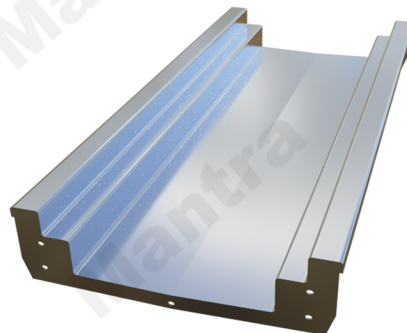


SS 304 KITCHEN DRAIN CHANNEL

LOAD CLASS
D400




APPLICATIONS OF STAINLESS STEEL
Road Carriageways (not transversal)
Hard Shoulders
Lay-bys with thick & Heavy-goods traffic
Petrol Stations



TECHNICAL DATA SHEET FOR KITCHEN DRAIN CHANNEL

CODE	MATERIAL	DIMENSIONS
M 26	SS 304 KITCHEN DRAIN CHANNEL	1000 X 150 X 50

We certified that the material described below fully conforms to IS 2062:2011. Chemical composition and Mechanical properties of the product, as tested in accordance with the Scheme of Testing and Inspection contained in the BIS Certification Marks Licence No.CM/L-7189081, are as indicated below against each order No. (PLEASE REFER TO IS 2062:2011 FOR DETAILS OF SPECIFICATION REQUIREMENTS)																							
Specification : IS 2062:2011 E260A				Chemical Composition																			
Specification Requirements				Min	C %	Mn %	S %	P %	Si %	Al %	N ppm	B ppm	Nb %	V %	Ti %	Cr %	Mo %	Ni %	Cu %	MAE %	C Eq%	Killing	
				Max	0.230	1.500	0.045	0.045	0.400	120												0	0.420
Cast / Heat No.	Coil No. / Packet No.	Nominal Size (mm) T X W X L	Pcs	Qty. MT	Test Results																		
24400850	2440085009	2.00 x 1250 x C		20.420	0.0540	0.457	0.0060	0.016	0.054	0.053	54		0.006	0.032					0.004	0.038	0.1304		
Total weight in Metric Tonnes				20.420	Grand total of coils / packets										1								
Specification : IS 2062:2011 E260A				Mechanical Properties																			
Specification Requirements				Tensile direction	YS MPa	UTS MPa	GL mm	EI %	YS/UTS ratio	Bend direction	Bend dia, mm	Bend result	CVN Impact direction	CVN Impact temp, °C	CVN Impact avg.energy J	Hardness HV 10	Hardness HRB	GS No.	IR %	HER mm	ECV	SET	
				Min	T	250.0	410.0		23.0		T												
				Max																			
Cast / Heat No.	Coil No. / Packet No.	Nominal Size (mm) T X W X L	Pcs	Qty. MT	Test Results																		
24400850	2440085009	2.00 x 1260 x C		20.420	T	383.00	437.00	5.65SR	34.00	0.876	T	2.0t	Ok										
This is to certify that the above mentioned products produced and supplied by JSW Steel Ltd, Dolvi works do not contain any radioactive element higher than the natural level. The product or packing material does not contain any hazardous substances as per RoHS norms																							
Billing Doc No. :7106572013 Invoice No. :23DO2700337381 Mode of transport :Truck Vehicle No. :MH06BD1851				Process Route : CONARC-LHF-CSP. Fully killed steel Legends : CONARC = ConArc Furnance,LHF = Laddle Heating Furnace, CSP =Compact Strip Production T x W x L = Thickness x Width x Length Chemical analysis = Laddle sample analysis, 1 MPa = 1N/mm2 GL = Gauge Length,YS = Yield Strength,UTS = Ultimate Tensile Strength, EI = Total elongation on standard GL, CVN = Charpy V-notch, L = Longitudinal, T = Transverse, °C = Degree Centigrade, GS = ASTM Grain Size, IR = Inclusion Rating, ECV = Erichsen Cupping Value, SET = Strainag Embrittlement Test, MAE = Micro Alloying Elements, C Eq% = Carbon Equivalent= [C+Mn/6+(Cr+Mo+V)/5+(Ni+Cu)/15] HER = Hole Expansion Ratio, RoHS = Restriction of Hazardous Substances The material supplied conforms to the specified dimensions and tolerances. We certify that material comply the certification as per EN 10204:2004 type 3.1.										 Pankaj Khasne Deputy General Manager Quality and System For JSW Steel Ltd.									

