



## KITCHEN FLOOR TRAP

LOAD CLASS  
D400



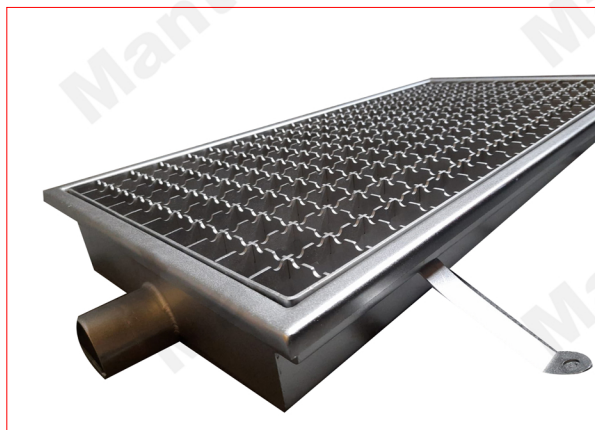
### APPLICATIONS OF STAINLESS STEEL

Road Carriageways (not transversal)

Hard Shoulders


Lay-bys with thick & Heavy-goods traffic

Petrol Stations



### TECHNICAL DATA SHEET FOR KITCHEN FLOOR TRAP

CODE	MATERIAL	DIMENSIONS
M 43	SS 304 KITCHEN FLOOR TRAP	300 X 300 X 150
M 44	SS 304 KITCHEN FLOOR TRAP	300 x 600 x 150

We certified that the material described below fully conforms to IS 2062:2011. Chemical composition and Mechanical properties of the product, as tested in accordance with the Scheme of Testing and Inspection contained in the BIS Certification Marks Licence No.CM/L-7189081, are as indicated below against each order No. (PLEASE REFER TO IS 2062:2011 FOR DETAILS OF SPECIFICATION REQUIREMENTS)																								
Specification : IS 2062:2011 E260A					Chemical Composition																			
Specification Requirements					Min	C %	Mn %	S %	P %	Si %	Al %	N ppm	B ppm	Nb %	V %	Ti %	Cr %	Mo %	Ni %	Cu %	MAE %	C Eq%	Killing	
					Max	0.230	1.500	0.045	0.045	0.400		120												0
Cast / Heat No.	Coil No. / Packet No.	Nominal Size (mm) T X W X L	Pcs	Qty. MT	Test Results																			
24400850	2440085009	2.00 x 1250 x C		20.420	0.0540	0.457	0.0060	0.016	0.054	0.053	54		0.006	0.032						0.004	0.038	0.1304		
Total weight in Metric Tonnes					20.420	Grand total of coils / packets										1								
Specification : IS 2062:2011 E260A					Mechanical Properties																			
Specification Requirements					Tensile direction	YS MPa	UTS MPa	GL mm	EI %	YS/UTS ratio	Bend direction	Bend dia. mm	Bend result	CVN Impact direction	CVN Impact temp. °C	CVN Impact avg.energy J	Hardness HV 10	Hardness HRB	GS No.	IR %	HER mm	ECV	SET	
					Min	T	250.0	410.0		23.0		T												
					Max																			
Cast / Heat No.	Coil No. / Packet No.	Nominal Size (mm) T X W X L	Pcs	Qty. MT	Test Results																			
24400850	2440085009	2.00 x 1250 x C		20.420	T	383.00	437.00	5.65SR	34.00	0.876	T	2.0t	Ok											
This is to certify that the above mentioned products produced and supplied by JSW Steel Ltd, Dolvi works do not contain any radioactive element higher than the natural level. The product or packing material does not contain any hazardous substances as per RoHS norms																								
Billing Doc No. :7106572013					Process Route : CONARC-LHF-CSP.																			
Invoice No. :23DO2700337381					Fully killed steel																			
Mode of transport :Truck					Legends : CONARC = ConArc Furnance,LHF = Laddle Heating Furnace, CSP =Compact Strip Production																			
Vehicle No. :MH06BD1851					T x W x L = Thickness x Width x Length Chemical analysis = Laddle sample analysis, 1 MPa = 1N/mm2 GL = Gauge Length,YS = Yield Strength,UTS = Ultimate Tensile Strength, EI = Total elongation on standard GL, CVN = Charpy V-notch, L = Longitudinal, T = Transverse, °C = Degree Centigrade, GS = ASTM Grain Size, IR = Inclusion Rating, ECV = Erichsen Cupping Value, SET = Strainag Embrittlement Test, MAE = Micro Alloying Elements, C Eq% = Carbon Equivalent= [C+Mn/6+(Cr+Mo+V)/5+(Ni+Cu)/15] HER = Hole Expansion Ratio, RoHS = Restriction of Hazardous Substances The material supplied conforms to the specified dimensions and tolerances. We certify that material comply the certification as per EN 10204:2004 type 3.1.																			
					 Pankaj Khasne Deputy General Manager Quality and System For JSW Steel Ltd.																			

2- Classifications according American Standard ASTM

5- Classification according to Standard EN 10111 (2008) & symbolic designation according to EN 10027-1 (-2) (2006)

8- Hooking System between the gratings through hooks and holes.

N.B.Sizes and weights are subject to usual manufacturing tolerance values.

