



# SS 304 SELF SLOPPING CHANNEL

LOAD CLASS  
D400



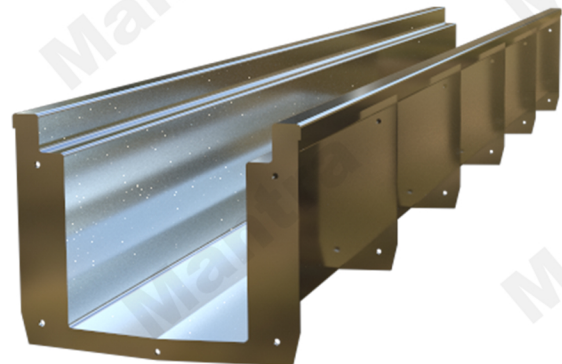
## APPLICATIONS OF STAINLESS STEEL

Road Carriageways (not transversal)

Hard Shoulders

Lay-bys with thick & Heavy-goods traffic

Petrol Stations



## TECHNICAL DATA SHEET FOR SS 304 SELF SLOPPING CHANNEL

CODE	MATERIAL	DIMENSIONS
M 35	SS 304 SELF SLOPPING	1000 MM X150 MM X 50 MM
M 36	SS 304 SELF SLOPPING	1000 MM X150 MM X 100 MM
M 37	SS 304 SELF SLOPPING	1000 MM X200 MM X 80 MM

We certified that the material described below fully conforms to IS 2062:2011. Chemical composition and Mechanical properties of the product, as tested in accordance with the Scheme of Testing and Inspection contained in the BIS Certification Marks Licence No.CM/L-7189081, are as indicated below against each order No. (PLEASE REFER TO IS 2062:2011 FOR DETAILS OF SPECIFICATION REQUIREMENTS)																									
Specification : IS 2062:2011 E260A				Chemical Composition																					
Specification Requirements				C %	Mn %	S %	P %	Si %	Al %	N ppm	B ppm	Nb %	V %	Ti %	Cr %	Mo %	Ni %	Cu %	MAE %	C Eq%	Killing				
				Min					0.020												0				
				Max	0.230	1.500	0.045	0.045	0.400	120									0	0.420					
Cast / Heat No.	Coil No. / Packet No.	Nominal Size (mm) T X W X L	Pcs Qty. MT	Test Results																					
24400850	2440085009	2.00 x 1250 x C	20.420	0.0540	0.457	0.0060	0.016	0.054	0.053	54		0.006	0.032					0.004	0.038	0.1304					
Total weight in Metric Tonnes				20.420	Grand total of coils / packets										1										
Specification : IS 2062:2011 E260A				Mechanical Properties																					
Specification Requirements				Tensile direction	YS MPa	UTS MPa	GL mm	EI %	YS/UTS ratio	Bend direction	Bend dia. mm	Bend result	CVN Impact direction	CVN Impact temp. °C	CVN Impact avg.energy J	Hardness HV 10	Hardness HRb	GS No.	IR %	HER mm	ECV	SET			
				Min	T	250.0	410.0		23.0	T															
				Max																					
Cast / Heat No.	Coil No. / Packet No.	Nominal Size (mm) T X W X L	Pcs Qty. MT	Test Results																					
24400850	2440085009	2.00 x 1250 x C	20.420	T	383.00	437.00	5.65SR	34.00	0.876	T	2.0t	Ok													
This is to certify that the above mentioned products produced and supplied by JSW Steel Ltd, Dolvi works do not contain any radioactive element higher than the natural level. The product or packing material does not contain any hazardous substances as per RoHS norms																									
Billing Doc No. :7106572013				Process Route : CONARC-LHF-CSP. Fully killed steel Legends : CONARC = ConArc Furnace, LHF = Laddle Heating Furnace, CSP = Compact Strip Production T x W x L = Thickness x Width x Length Chemical analysis = Laddle sample analysis, 1 MPa = 1N/mm2 GL = Gauge Length,YS = Yield Strength,UTS = Ultimate Tensile Strength, EI = Total elongation on standard GL, CVN = Charpy V-notch, L = Longitudinal, T = Transverse. °C = Degree Centigrade, GS = ASTM Grain Size, IR = Inclusion Rating, ECV = Erichsen Cupping Value, SET = Strainag Embrittlement Test, MAE = Micro Alloying Elements, C Eq% = Carbon Equivalent= [C+Mn/6+(Cr+Mo+V)/5+(Ni+Cu)/15] HER = Hole Expansion Ratio, RoHS = Restriction of Hazardous Substances The material supplied conforms to the specified dimensions and tolerances. We certify that material comply the certification as per EN 10204:2004 type 3.1.																					
Invoice No. :23DO2700337381																									
Mode of transport :Truck																									
Vehicle No. :MH06BD1851																									
				<div>Pankaj Khasne Deputy General Manager Quality and System For JSW Steel Ltd.</div>																					

2- Classifications according American Standard ASTM

5- Classification according to Standard EN 10111 (2008) & symbolic designation according to EN 10027-1 (-2) (2006)

8- Hooking System between the gratings through hooks and holes.

N.B.Sizes and weights are subject to usual manufacturing tolerance values.

