



SLOTTED GRATINGS L

TYPE C 250
MIDDLE
DRIVEWAY



APPLICATIONS OF STAINLESS STEEL

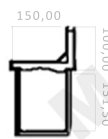
Low visual impact drainage in public and private places:
Pedestrian areas
Private car parks or multi-level car parks
Roads subjected to middle loads (urban speed ≤ 40 km/h)
Areas not subjected to dock movements



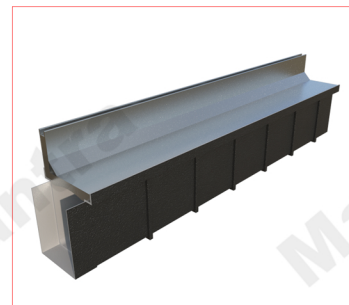
Detail View



Front View




Side View



L- SHAPED GRATING

L- SHAPED GRATING	PRICE €	MATERIAL	DIMENTIONS LxH	HEIGHT OF SLOT H	COMPOSITE CHANNEL H	SECTION DRAINAGE cm	OPENINGS F1xF2 mm
M01		hot dip galvanised steel DD11(1.0332) ⁵	998x150x50	30	150	1,80	998x18
M02		pickled stainless steel AISI 304 ²					
M03		hot dip galvanised steel DD11(1.0332) ⁵	998x200x80	100			
M04		pickled stainless steel AISI 304 ²					

We certified that the material described below fully conforms to IS 2062:2011. Chemical composition and Mechanical properties of the product, as tested in accordance with the Scheme of Testing and Inspection contained in the BIS Certification Marks Licence No.CML-7189081, are as indicated below against each order No. (PLEASE REFER TO IS 2062:2011 FOR DETAILS OF SPECIFICATION REQUIREMENTS)																								
Specification : IS 2062:2011 E250A				Chemical Composition																				
Specification Requirements				Min	C %	Mn %	S %	P %	Si %	Al %	N ppm	B ppm	Nb %	V %	Ti %	Cr %	Mo %	Ni %	Cu %	MAE %	C Eq%	Killing		
				Max	0.230	1.500	0.045	0.045	0.400	0.020	120											0		
Cast / Heat No.	Coil No. / Packet No.	Nominal Size (mm) T X W X L	Pcs Qty. MT	Test Results																				
24400850	2440085009	2.00 x 1250 x C	20.420	0.0540	0.457	0.0060	0.016	0.054	0.053	54			0.006	0.032					0.004	0.038	0.1304			
Total weight in Metric Tonnes				20.420	Grand total of coils / packets				1															
Specification : IS 2062:2011 E250A				Mechanical Properties																				
Specification Requirements				Tensile direction	YS MPa	UTS MPa	GL mm	EI %	YS/UTS ratio	Bend direction	Bend dia. mm	Bend result	CVN Impact direction	CVN Impact temp. °C	CVN Impact avg. energy J	Hardness HV ₁₀	Hardness HRB	GS No.	IR %	HER mm	ECV %	SET mm		
				Min	T	250.0	410.0		23.0		T													
				Max																				
Cast / Heat No.	Coil No. / Packet No.	Nominal Size (mm) T X W X L	Pcs Qty. MT	Test Results																				
24400850	2440085009	2.00 x 1250 x C	20.420	T	383.00	437.00	5.65SR	34.00	0.876	T	2.0t	Ok												
This is to certify that the above mentioned products produced and supplied by JSW Steel Ltd, Dolvi works do not contain any radioactive element higher than the natural level. The product or packing material does not contain any hazardous substances as per RoHS norms																								
Billing Doc No. :7106572013 Invoice No. :23DO2700337381 Mode of transport :Truck Vehicle No. :MH06BD1851				Process Route : CONARC-LHF-CSP. Fully killed steel Legends : CONARC = ConArc Furnance ,LHF = Laddle Heating Furnace, CSP =Compact Strip Production T x W x L = Thickness x Width x Length Chemical analysis = Laddle sample analysis, 1 MPa = 1N/mm2 GL = Gauge Length,YS = Yield Strength,UTS = Ultimate Tensile Strength, EI = Total elongation on standard GL, CVN = Charpy V-notch, L = Longitudinal, T = Transverse, °C = Degree Centigrade, GS = ASTM Grain Size, IR = Inclusion Rating, ECV = Erichsen Cupping Value, SET = Strainag Embrittlement Test, MAE = Micro Alloying Elements, C Eq% = Carbon Equivalent= [C+Mn/6+(Cr+Mo+V)/5+(Ni+Cu)/15] HER = Hole Expansion Ratio, RoHS = Restriction of Hazardous Substances The material supplied conforms to the specified dimensions and tolerances. We certify that material comply the certification as per EN 10204:2004 type 3.1.																			 Pankaj Khasne Deputy General Manager Quality and System For JSW Steel Ltd.	

2- Classifications according American Standard ASTM

5- Classification according to Standard EN 10111 (2008) & symbolic designation according to EN 10027-1 (-2) (2006)

8- Hooking System between the gratings through hooks and holes.

N.B.Sizes and weights are subject to usual manufacturing tolerance values.

