

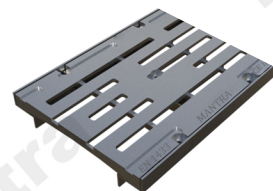
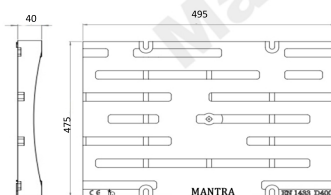


GRATINGS

TYPE D400

**APPLICATIONS OF DUCTILE IRON**

Road Carriageways (not transversal)
Hard Shoulders
Lay-bys with thick & Heavy-goods traffic
Petrol Stations

**SLOTTED GRATING**

CODE	MATERIAL	DIMENSIONS LxH (mm)	WEIGHT	DRAINAGE SURFACE (cm) ²	OPENINGS F1xF2(mm)	FIXING SYSTEM protrusion4
M12	GJS 500/7 ⁶ Ductile iron water based Paint Coated	495x475x40	30.76KG	486	400,20	

COMPOSITION

	C	Mn	Si	Cr	Ni	Cu	Mg
MIN %	3.4	0	1.8	0	0	0.15	0.025
MAX %	3.8	1	2.8	0.08	1.5	1.2	0.06

PHYSICAL AND MECHANICAL PROPERTIES

UTS (psi)	100000
YS (psi)	70000
% Elongation Min	3%
Hardness (BHN)	240-300
Density (lb/in3)	0.257-0.26
Thermal Conductivity (Cal/cmsec°C)	0.06
Specific Heat at 70 F (Btu/b°F)	0.15
Melting Temperature (°F)	2100

1. For drainage purposes use the drain gate with outlet kit (available in two versions ø100 and ø110)
N.B. Waterproofing in order to ensure the channels are waterproof, a bituminous adhesive sealant should be used
Heat-sealing the channel joints make sure there will be no leakage through said joints for a very long time. For further
info, please contact MANTRA DRAIN SOLUTIONS.
N.B. Sizes and weights are subject to usual manufacturing tolerance values.

